

BE
THE ENVY
OF ALL YOUR
NEIGHBOURS





Weatherwell

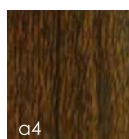
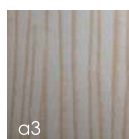
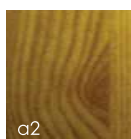
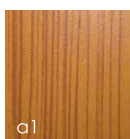
**DESIGNED FOR BEAUTY.
BUILT TO WEATHER LIFE.**

The Weatherwell Collection is perfectly situated to bring indoor and outdoor spaces closer together. Combining strength, security and flexibility, aluminium shutters are the highlight of the Alfresco living movement. Providing the right mix of light, airflow and temperature control, this window solution allows you to maximise your available space without sacrificing the existing design elements of your home. This unique product is available in multiple blade sizes, fixed or moving louvres and an array of designer finishes.



WEATHERWELL ALUMINIUM OPTIONS

TIMBER GRAIN FINISHES



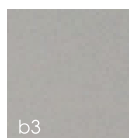
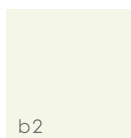
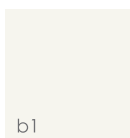
Timber Grain Finishes

- a1. Light Cedar
- a2. Golden Oak
- a3. Limewash
- a4. Walnut

Available Security Options

- Flush Bolt
- Lockable Handle
- Security Bolt

STANDARD COLOUR OPTIONS



Standard Colour Options

- b1. White
- b2. Pearl
- b3. Silver
- b4. Black

Blade Sizes

- 64mm, 89mm, and 114mm



Demonstration 1



Demonstration 2



Demonstration 3



Demonstration 4

DEMONSTRATION 1: MULTI-FOLD INSTALLATION

This is the most flexible of all the installation types. You will have the exciting option of completely folding the shutters away from the opening when a non obstructed view is desired.

DEMONSTRATION 3: SLIDING INSTALLATION

Sliding shutters are a great when you need to cover sliding doors, enclose balconies or any other outdoor area.

DEMONSTRATION 2: HINGED INSTALLATION

A beautiful alternative to wood. It is a great choice when kids and pets are a factor and in high traffic areas.

DEMONSTRATION 4: FIXED INSTALLATION

An excellent option when shutters are not required to be removed from an opening and only the blades need to be operated.

DESIGNED FOR BEAUTY. BUILT TO WEATHER LIFE.

Weatherwell Aluminium shutters are an unprecedented product and can take your home to a whole new level of style . Quite simply, they combine beauty, durability and versatility and can transform your home and the way you live.

Unlike any other shutters, they allow you to combine indoor and outdoor living, have the ability to weather any storm, can enhance your home with elegance and style and open up possibilities to create additional rooms by enclosing spaces.

THE WEATHERWELL DIFFERENCE

Quality and Elegance.

Weatherwell shutters are defined by quality and elegance.

Bring the outside in.

Weatherwell shutters help you maximise and utilise your indoor and outdoor living spaces.

A flexible option.

Weatherwell shutters are versatile and can be ordered to fit any window size.

Peace of mind.

Weatherwell shutters are strong and durable and are built to weather life.

Contact one of our sales agents today to find out how Weatherwell shutters can transform your home and you will soon be the envy of all your neighbours.

YOU CAN ALSO CONTACT US ABOUT OUR RANGE OF TIMBER SHUTTERS

PORTSIDE SHUTTERS & BLINDS



467 High Street, Prahran East VIC 3181
PHONE: 9510 1100 | FAX: 9510 1545
EMAIL: info@portsideshutters.com.au
WEB: www.portsideshutters.com.au

CALL NOW FOR AN OBLIGATION FREE QUOTE